



Studio style



Claire O'Hea's textile designs are reminiscent of classic midcentury designs but used in a modern way. Cushion covers, lampshades and free-hanging wall panels

Try the Great Western Studios for some unusual Christmas shopping ideas

More than 10 years ago a derelict railway warehouse in Westbourne Park was converted into a workspace for artists and today Great Western Studios is home to over 140 creative people, working in lots of different disciplines. On 2 and 3 December they are all opening their doors to invite buyers, collectors and friends to view their work and come away with some original and interesting Christmas presents. Work on display will range from ceramics to fashion via sculpture, painting and furniture, with prices stretching from £2 to £20,000.

Here's a taster. ■

Great Western Studios, Great Western Road W9 (020 7221 0100)
The Christmas Open Studios takes place on 2 and 3 December from 12 to 6pm.

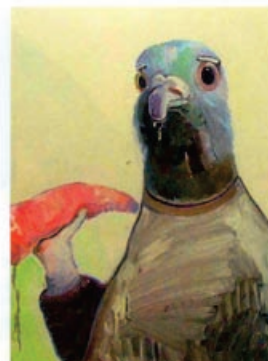
22 The Hill November 2006



Alex Henebury's classic, well made and well-designed furniture can be commissioned in a wide variety of woods and surfaces



Primarily involved in illustration, Jessie Ford also applies her unique style to decorative furniture and also to children's wall murals

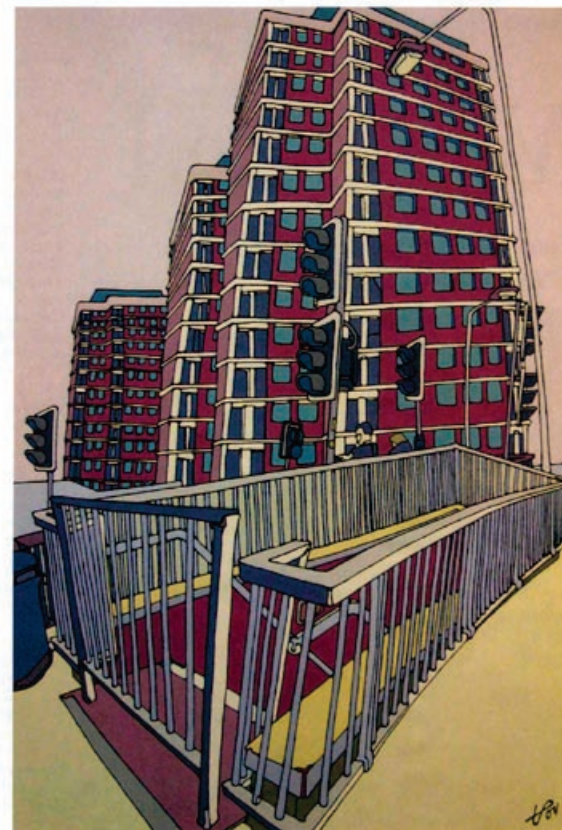


Work from David Ben White's graduate exhibition at Central St Martin's was purchased by the collage for their own collection. He has recently completed a series of pigeon paintings

Screenprinter Kate Gibb has produced iconic screenprints for the Chemical Brothers and worked for Suede, The Magic Numbers, Dries van Noten and Penguin Books



Lisa Jones's hand made cards and giftwrap are influenced by 1970s ceramics, popular 1950s illustration, flea market ephemera, haberdashers and Scandinavian folklore



Illustrator and painter Tommy Penton is currently putting together a book and previous clients include BA, Virgin Records and the Edinburgh Film Festival



Painter Katherine Lubar is interested in light, shadow and pattern

The Hill November 2006 23